



Rules of Origin : Strengthening Thailand's Production Capacity Toward Sustainable Export Growth





Rules of Origin : Strengthening Thailand's Production Capacity Toward Sustainable Export Growth

By

Mrs. Arada Fuangtong

Director-General

Department of Foreign Trade





**GEOPOLITICAL ERA:
FTA is the way to survive,
not only an option**

AND

**Production genuinely carried out in Thailand,
leveraging Thai-Chinese synergies for
sustainable exports**



**Thailand and China share a close and enduring relationship,
as reflected in the saying:**

“Zhong Tai Yi Jia Xin” - Thais and Chinese are like one family



Sustainable Export: Utilization of FTA Preferences

In force (14 agreements, 18 countries)

	TAFTA	Australia	
	TNCEP	New Zealand	
	JTEPA	Japan	
	TIFTA	India	
	TPFTA	Peru	
	TCFTA	Chile	
	AFTA	ASEAN	
	ACFTA	China	
	AIFTA	India	
	AJCEP	Japan	
	AKFTA	South Korea	
	AANZFTA	Australia	
		New Zealand	
	AHKFTA	Hongkong	
	RCEP	ASEAN + 5	



FTAs expected to enter into force in 2026

	SLTFTA	Sri Lanka	
		<i>Signed on 3 February 2024 (15th FTA)</i>	
	Thai-EFTA	European Free Trade Association	
		<i>Signed on 23 January 2025 (16th FTA)</i>	
	THBTFTA	Bhutan	
		<i>Signed on 19 February 2025 (17th FTA)</i>	

FTAs under negotiaiton

	Thai-EU	European Union	
	KTCEPA	South Korea	
	Thai-UAE	United Arab Emirates	
	ACAFTA	Canada	

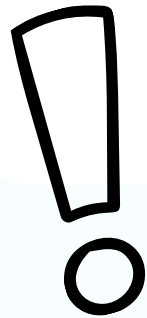
5 Upgraded FTA

	TPFTA	Peru	
	ATIGA	ASEAN (Trade in Goods)	
	AIFTA	India	
	AKFTA	South Korea	
	AANZFTA	Australia New Zealand	 

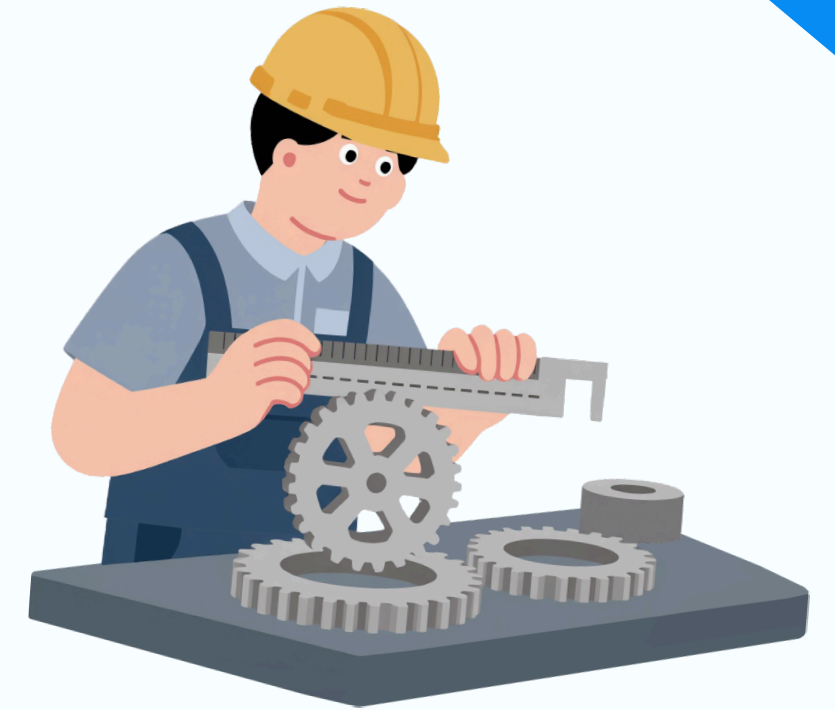
Implemented on 1 October 2025

ACFTA	China	
	(Significantly concluded)	

**HOW
IMPORTANT**



Rules of origin



- Cost and brand image management strategies that will help Thai products achieve sustainable growth in the global market
- A certificate of origin—often seen as a product “passport”—that helps reduce or eliminate tariffs.

2 Types of Rules of Origin (RoO)

Types	RoO	Issuing Authority	C/O Form
<u>Preferential</u> Rules of Origin	FTAs and GSP	<ul style="list-style-type: none">• Department of Foreign Trade (DFT)	ex. Form E (China) Form RCEP (RCEP) Form D (ASEAN)
<u>Non-preferential</u> Rules of Origin	According to Importing Countries	<ul style="list-style-type: none">• Department of Foreign Trade (DFT)• Federal of Thai Industries (FTI)• Thai Chamber of Commerce (TCC)	Non-preferential C/O

Rules of Origin

Wholly Obtained: WO

**Not Wholly Obtained
(Substantial Transformation)**

Agricultural and processed agricultural products

natural resources

1. CTC Rule

2. RVC

3. Specific Process

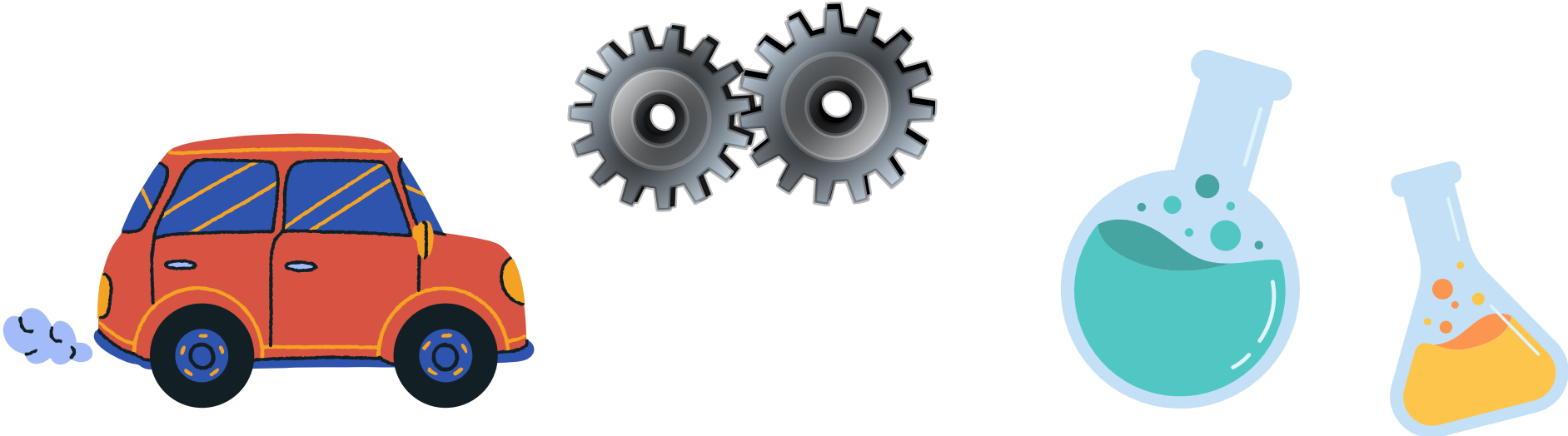


Industrial products
such as part of vehicles, electronic components and steel etc.

Industrial products
such as chemical, textile, etc.

Fruits

Minerals



Black Garlic

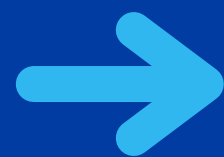
Fishery Products

Change in Tariff Classification: CTC

Change in Chapter:

CC

(2-digit level)



39XX.xx

Imported raw materials:
Cellulose fiber

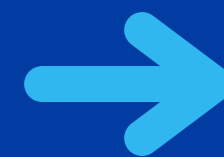
30XX.xx

Export Good:
Gauze bandages

Change in Tariff Heading:

CTH

(4-digit level)



3303.XX

Imported raw materials:
Perfumes

3301.XX

Export Good:
Essential oils

Change in Tariff Sub-Heading:

CTSH

(6-digit level)



8415.90

Imported raw materials:
Air conditioning Parts

8415.10

Export Good:
Air conditioner

Regional Value Content (RVC)

Under various FTAs to which Thailand is a party

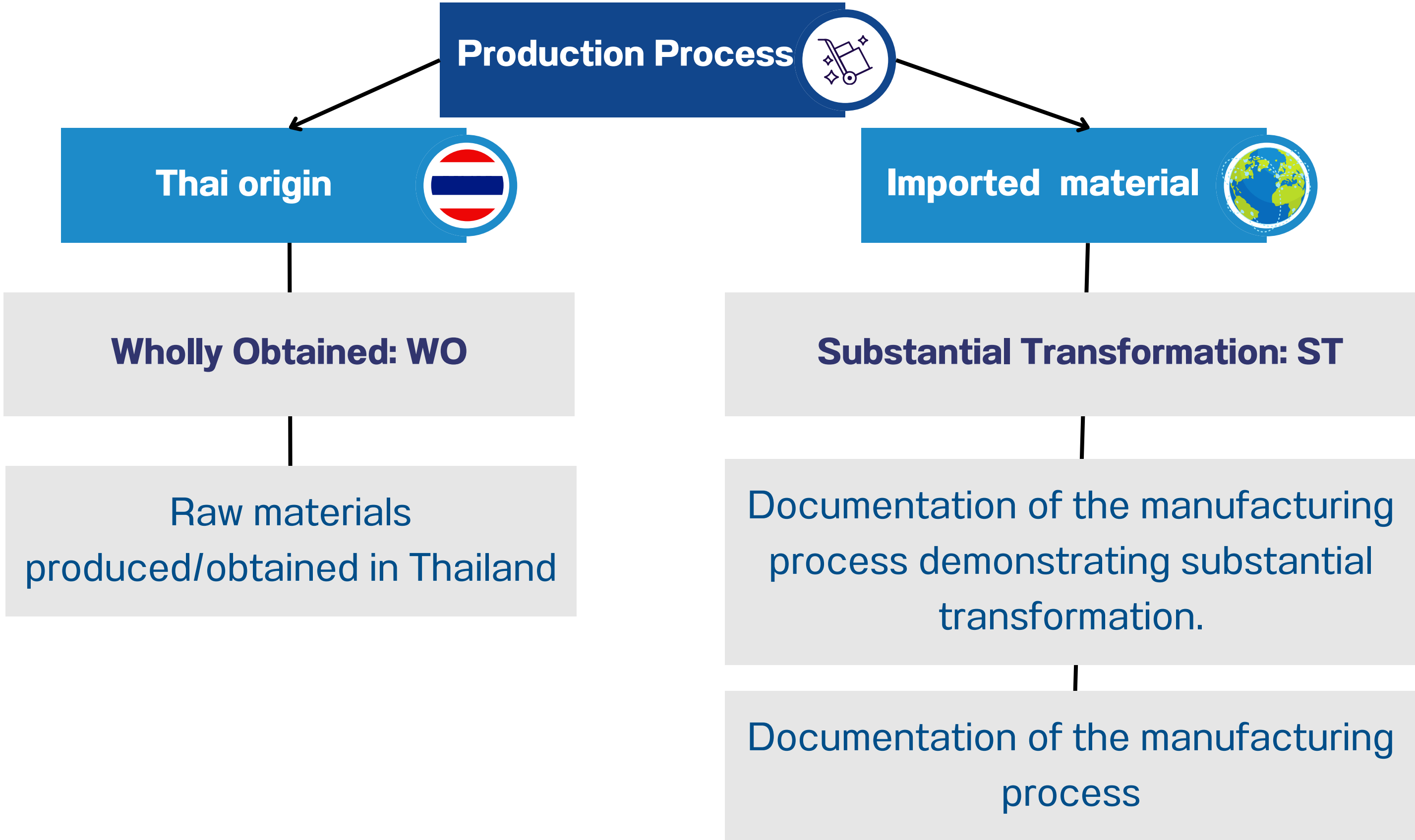
$$\frac{(\text{Cost + profit})}{\text{F.O.B price}} * 100 \geq 40\%$$

*Use the price per unit.

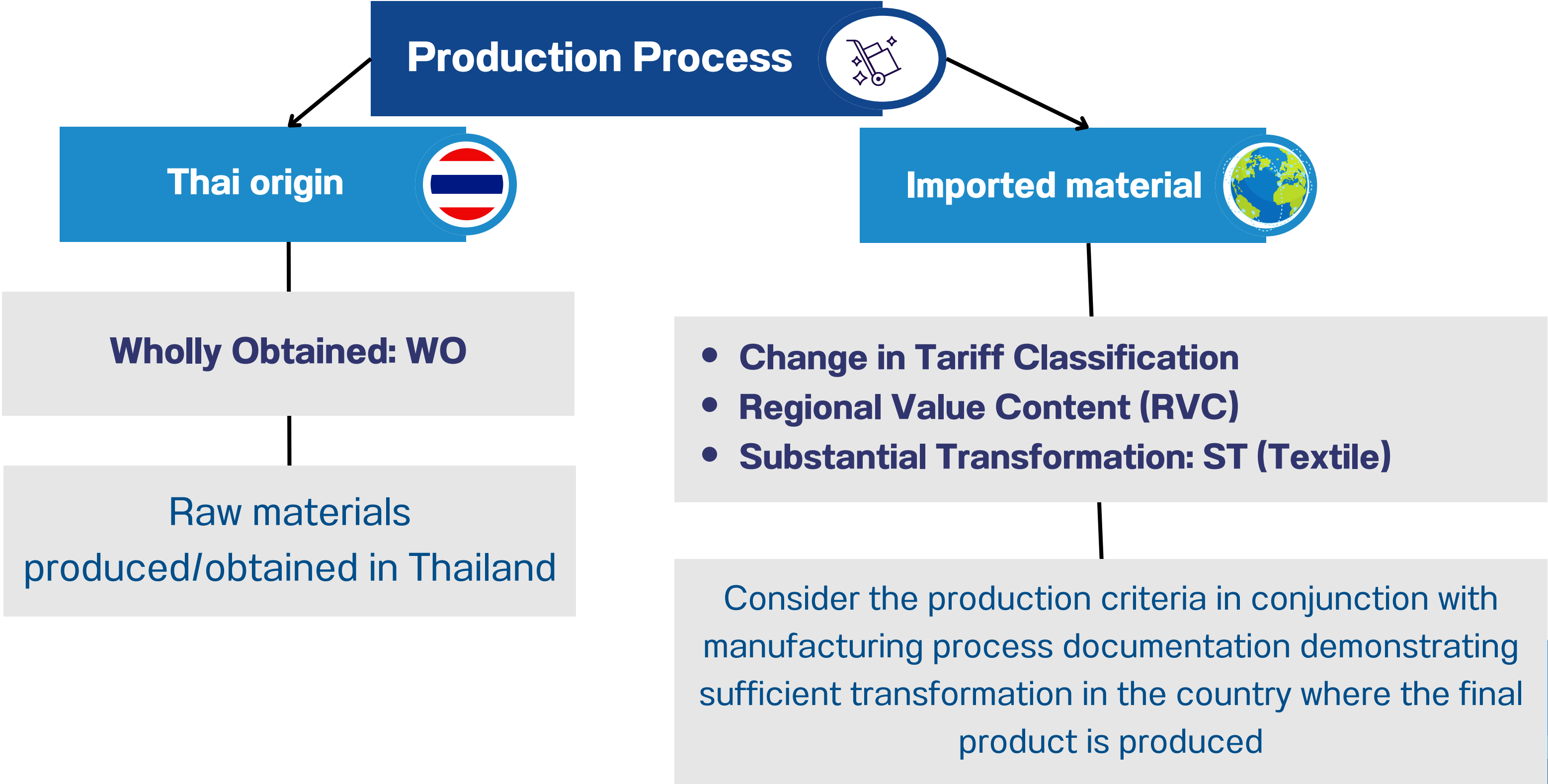
Cost consists of

1. Value of raw materials
2. Labor cost
3. Overhead cost
4. Other expenses

Criteria for Determining the Origin of Goods for Export to the USA



Guidance on Non-Preferential Rules of Origin for the EU



Rules of Origin (RoO) Criteria

PRODUCTS	ASEAN (FTA)	USA	EU
<u>8708.70</u> Wheels and parts and accessories thereof	RVC 40%	Substantial Transformation: ST (CTSH)	CTH; or 45% value added rule
<u>9002.11</u> Lenses for cameras	RVC 40% or CTSH	Substantial Transformation: ST (CTSH)	CTH; or 45% value added rule
<u>3923.21</u> Plastic	RVC 40% or CTH	Substantial Transformation: ST (CTH)	CTH

Sources

USA : <https://www.govinfo.gov/app/details/CFR-2012-title19-vol1/CFR-2012-title19-vol1-part102>

EU : https://taxation-customs.ec.europa.eu/table-list-rules-conferring-non-preferential-origin-products-following-classification-cn_en

ASEAN : https://roversplus.dft.go.th/public/search_public_rules.php

DFT : Rules of Origin Watch lists

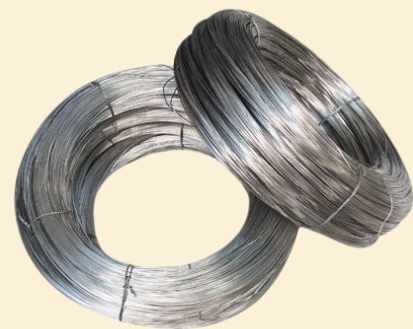


Watch lists



USA (49 items)

- **Such as** honey, hardwood plywood, passenger car and light truck tires, steel or alloy-steel pipes/tubes, forged steel fittings, aluminum extrusions, aluminum wire and cable, pump parts, hard disk drives , automotive wheels, gearboxes, brakes, etc.



EU (9 items)

- **Such as** bicycles, electric bicycles, steel automotive wheels, iron or steel tube/pipe fittings, aluminum extrusions, fiberglass, steel wire rod, etc.



Examples of Origin Determination for USA watch list items



Imported raw material

7228.30

steel bars/rods



Export product

7304.00

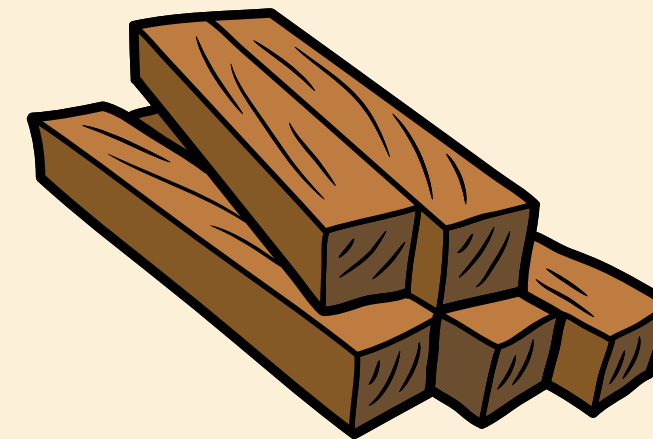
steel pipes



**Passed RoO requirements under
the ST rule**

Domestic raw material

Rubberwood



Export product

9403.60

wooden furniture



**Passed RoO requirements under
the ST rule**

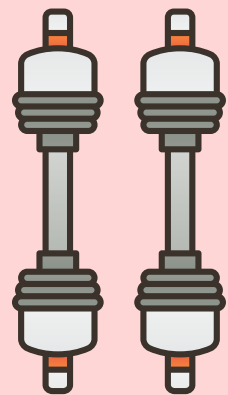
Examples of Origin Determination for USA watch list items



Imported raw material

8708.50

automotive drive-shaft joints



Export product

8708.50

automotive drive-shaft joints



**Failed to meet the RoO requirement
under ST rules**

as the imported raw materials share the same
HS tariff classification as the exported finished
product

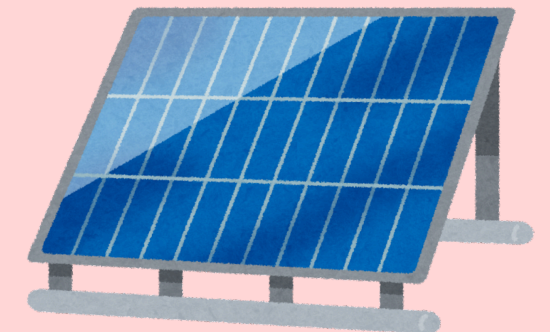
Imported raw material

Finished solar
modules/panels and parts
(e.g., frame, junction box)



Export product

Solar panels

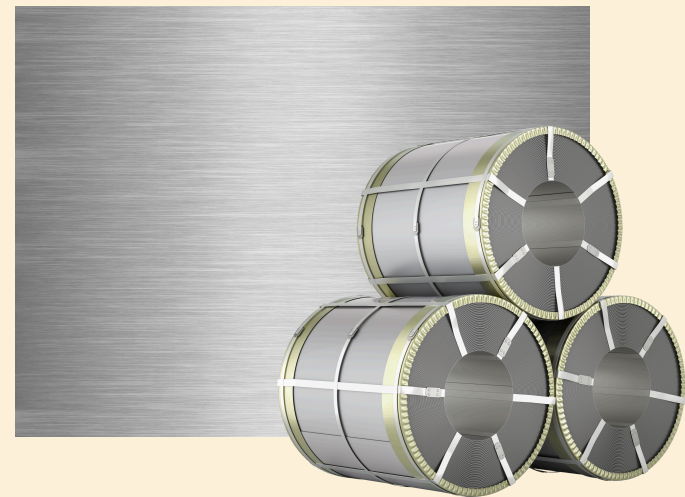


Failed to meet the RoO requirement
Because assembly of finished panels and
parts is considered insufficient transformation.

Examples of Origin Determination for EU watch list items



Imported raw material
hot-rolled steel sheet
7326.90

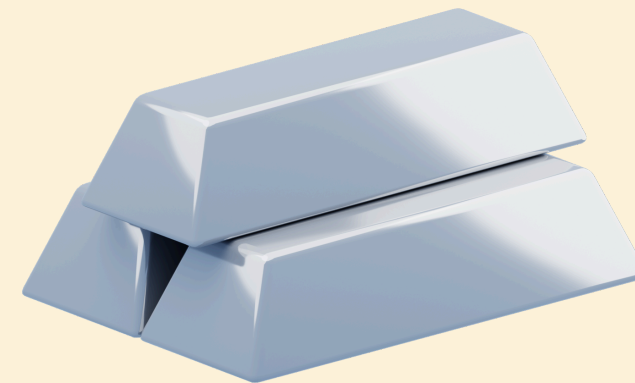


**Passed RoO requirements under
the ST rule**

Export product
wheel rims
8716.90

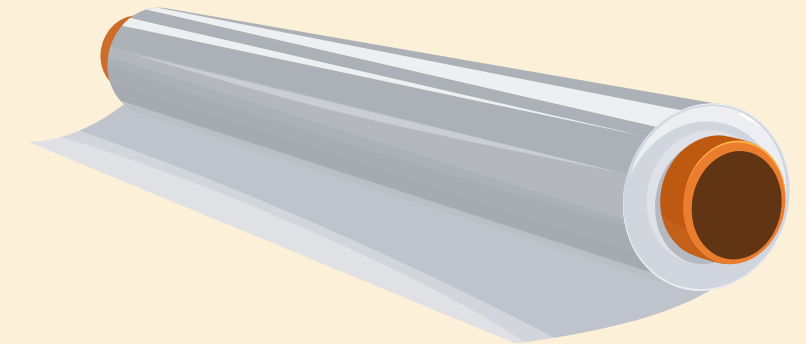


Domestic raw material
aluminium, unwrought
7601.10



**Passed RoO requirements under
the ST rule**

Export product
aluminium foil
7607.19



Examples of Origin Determination for EU watch list items



Imported raw material
7304

Raw pipes/Mother pipes



Export product
7304

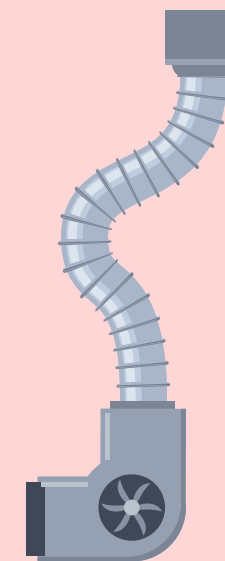
Seamless Pipes



**Failed to meet the RoO requirement due to
insufficient transformation**
EU ST rule - change in tariff heading (CTH)

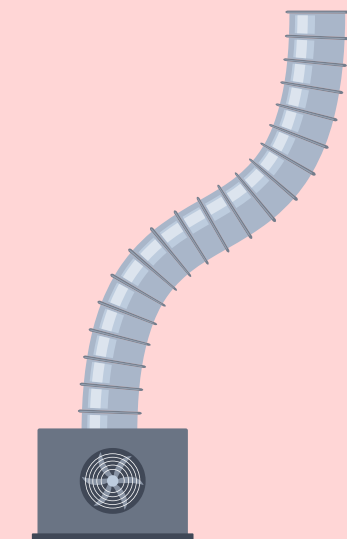
Imported raw material
7608.20

Aluminium air-conditioning
pipes



Export product
7608.20

Aluminium air-conditioning
pipes



Failed to meet the RoO requirement - CTH rule
EU ST rule - change in tariff heading (CTH)

Advance Rulings

Process for requesting an advance ruling on the tariff classification of goods to be exported and on whether the production complies with the rules of origin.

US : Register online: <https://erulings.cbp.gov/s/>

- Before submitting the application, it is recommended to search prior rulings in CROSS (Customs Ruling Online Search System)

EU : Advance rulings on origin:

https://taxation-customs.ec.europa.eu/customs/rules-origin-goods/binding-origin-information-boi_en

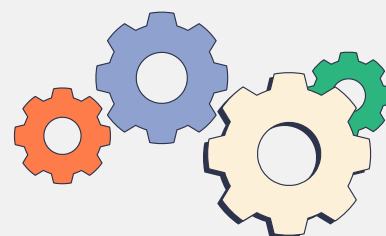
- Submit the application through customs system of each member state.

Required Documents/information (in English)



User Manual

Instructions for Use



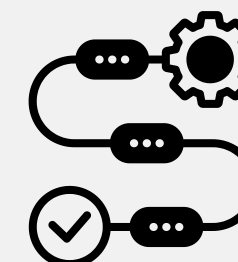
Product diagram

with component identification



Bill of materials (BOM)

Manufacturing country, price, and HS code



Manufacturing process

(with photographs and explanations)



Functional description

of each component

CERTIFICATE OF ORIGIN (C/O) ISSUANCE

5 Steps (online) with DFT



<https://smartco.dft.go.th/product-tariff>

<https://smart-1.dft.go.th>

<https://roversplus.dft.go.th>

<https://smartco.dft.go.th>

<https://smartco.dft.go.th>



THANK YOU

For more information



Department of Foreign Trade



Hotline 1385



www.dft.go.th

